



# MONTHLY MEMBERSHIP PROGRESS REPORT

District 3 O

Results as of: 10/31/2015

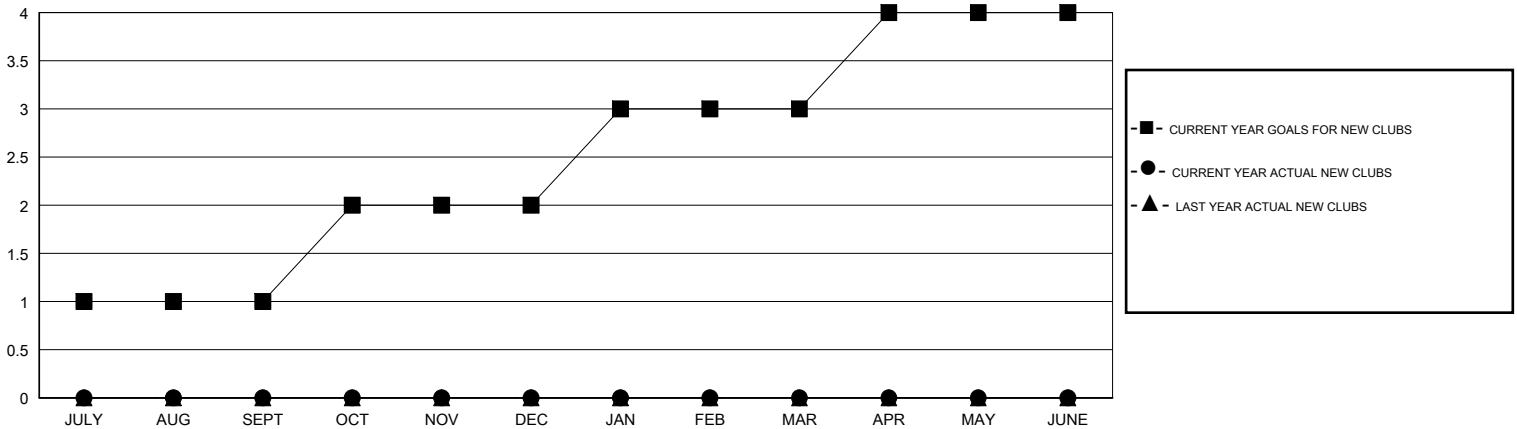
GMT: HAL GRIFFIN

LOCATION OKLAHOMA

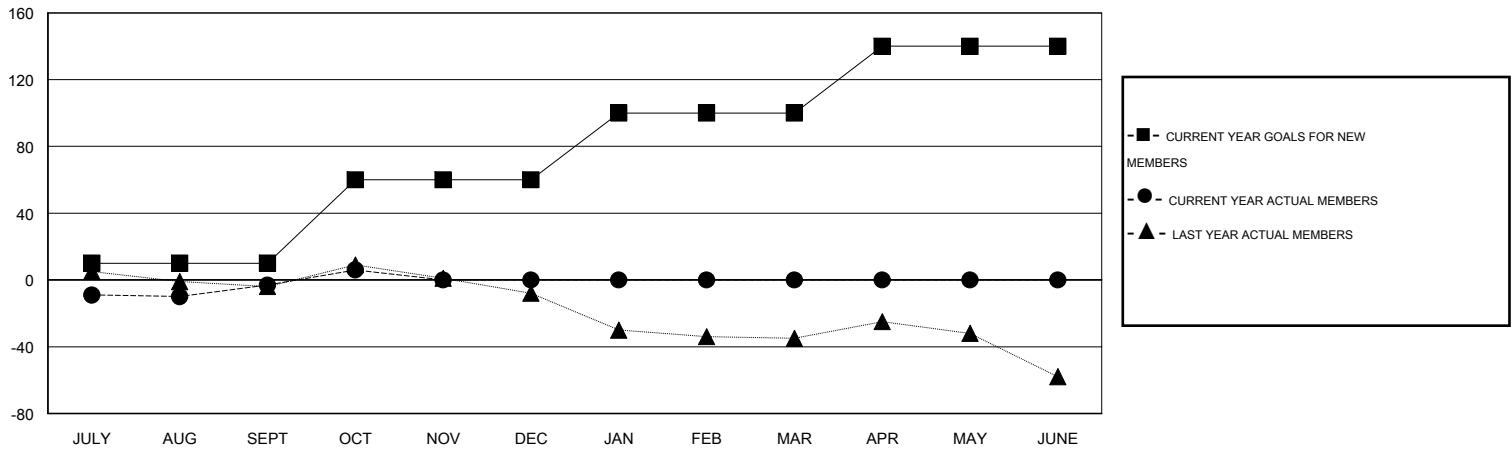
GMT CA 1

Clubs					Members				
RESULTS FOR 2015-2016					RESULTS FOR 2015-2016				
QUARTER	NEW CLUB GOAL	NEW CLUBS	DROPPED CLUBS	NET GAIN/LOSS	QUARTER	NEW MEMBER GOAL	CHARTER AND NEW MEMBERS ADDED	DROPPED MEMBERS	NET GAIN/LOSS
JULY/AUG/SEPT	1	0	0	0	JULY/AUG/SEPT	10	27	30	-3
OCT/NOV/DEC	1	0	0	0	OCT/NOV/DEC	50	16	7	9
JAN/FEB/MAR	1	0	0	0	JAN/FEB/MAR	40	0	0	0
APR/MAY/JUNE	1	0	0	0	APR/MAY/JUNE	40	0	0	0

GOALS AND ACTUAL NEW CLUBS CUMULATIVE



GOALS AND ACTUAL MEMBERS CUMULATIVE



DROPPED CLUBS: 0	15 CLUBS OF 38 ADDED 1 OR MORE NEW MEMBERS	<b>GENDER DISTRIBUTION</b>
		MALE 598 (64.86%)
		FEMALE 324 (35.14%)
<b>DROPPED MEMBERS</b>	<a href="#">CLICK HERE FOR HEALTH ASSESSMENT DATA</a>	<b>FAMILY UNIT MEMBERS</b> 220
DECEASED 3		<b>HEAD OF HOUSEHOLD</b> 107
CLUB CANCELLED 0		<b>NON-HEAD OF HOUSEHOLD</b> 113
OTHER 34		
<b>TOTAL</b> 37		